



DISHWASHER S-100 230/50/1 DD

2.5 kW wash tank and 7.5 kW boiler

1302302



- ✓ Catering grade stainless steel construction (AISI 304 2B).
- ✓ Its double skinned hood ensures thermal and acoustic insulation and energy saving.
- ✓ Lifting bar activated hood opening.
- ✓ Magnetic hood micro-switch.
- ✓ Hood activated, auto cycle start.
- ✓ Rounded finish interior ensures no accumulation of dirt.
- ✓ Electronic, watertight, high-performance control panel.
- ✓ Wash and rinse temperature display.
- ✓ Precision positioned water jets guarantee optimum washing result for even the most stubbornly stained glasses.
- ✓ Easy to assemble, boltless rinse spray arms.
- ✓ Completely rounded, stainless steel wire rack support and guide.
- ✓ Double filter system provides effective wash pump protection.
- ✓ Easily removable dispersers and filters for cleaning and maintenance. No tools needed.
- ✓ Equipped with adjustable thermostats in tank and boiler and safety thermostat in boiler.
- ✓ Height-adjustable feet.
- ✓ Designed for quick and easy maintenance. Fast access to components for on-site maintenance.
- ✓ 100% tested.

SALES DESCRIPTION

Commercial pass-through dishwasher with a max. loading height of up to 400 mm and 3 wash cycles with thermal cycle delay option included. A stainless steel, top of tank filter system is also included as standard.

- ✓ Sturdy and reliable.
- ✓ Optimal washing results.
- ✓ Double skinned hood: thermal and acoustic insulation.
- ✓ Stainless Steel, sturdy and resistant washing arms that do not get damaged.
- ✓ Tank capacity above average: it takes more time to saturate the water of debris.
- ✓ 1.2 Hp wash pump: optimal washing results.
- ✓ Full optional list.
- ✓ **WRAS approval available in C models.**
- ✓ **All versions available in 400V/50Hz/3ph.**

INCLUDES

- ✓ Rinse aid pump.
- ✓ Detergent dosing equipment.
- ✓ 1 open basket.
- ✓ 1 plate basket.
- ✓ 1 cutlery basket.
- ✓ Stainless steel top-of-tank filter set.

ACCESSORIES

- ☐ Dosing equipment
- ☐ Tables for dishwashers P/X/S (pass-through model)
- ☐ Manual water softeners
- ☐ Automatic water softeners
- ☐ 500 x 500 mm. baskets
- ☐ Inserts & supplements
- ☐ High Feet Kit
- ☐ Booster pump kit
- ☐ Reverse Osmosis device OS-140P

- ✓ Suitable for straight in line and corner situations.
- ✓ Intuitive use.
- ✓ Top and bottom wash arms.



www.sammic.co.uk

Food Service Equipment Manufacturer

Unit 2, Trevan Road
Troon Industrial Park
LE4 9LS - Leicester

uksales@sammic.com
Tel.: +44 0116 246 1900



Project

Date

Item

Qty

Approved



WARE WASHING
PASS-THROUGH DISHWASHERS

product sheet
updated 09/03/2021



DISHWASHER S-100 230/50/1 DD

2.5 kW wash tank and 7.5 kW boiler



1302302

SPECIFICATIONS

Basket dimensions: 500 mm x 500 mm
Maximum glass height: 400 mm

Cycles: 3

Cycle duration: 60 " / 120 " / 180 "

Production baskets/hour: 60 / 30 / 20

✓ Boiler capacity: 10 l

✓ Wash tank capacity: 40 l

✓ Water consumption/cycle: 3.5 l

Electrical supply: 230 V / 50 Hz / 1 ~ (38.6 A - 16.8 A)___

Plug: -

Loading___

✓ Pump: 880 W / 1.2 Hp

✓ Tank: 2500 W

✓ Boiler: 7500 W

✓ Total loading: 8380 W

External dimensions (WxDxH)

✓ Width: 640 mm (: 732 mm)

✓ Depth: 756 mm (: 860 mm)

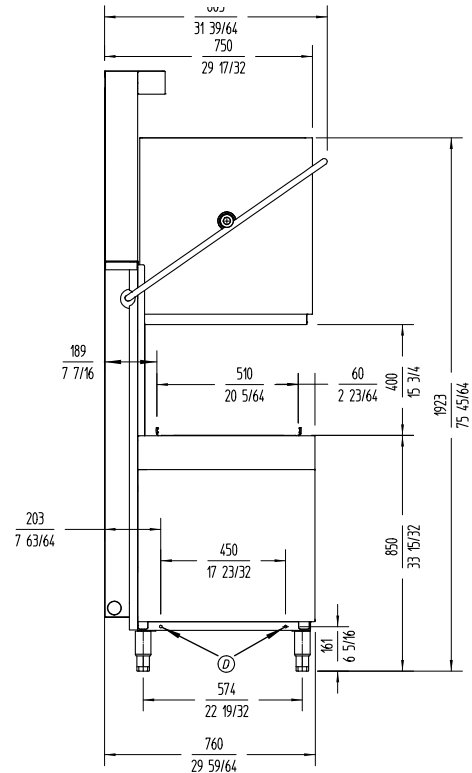
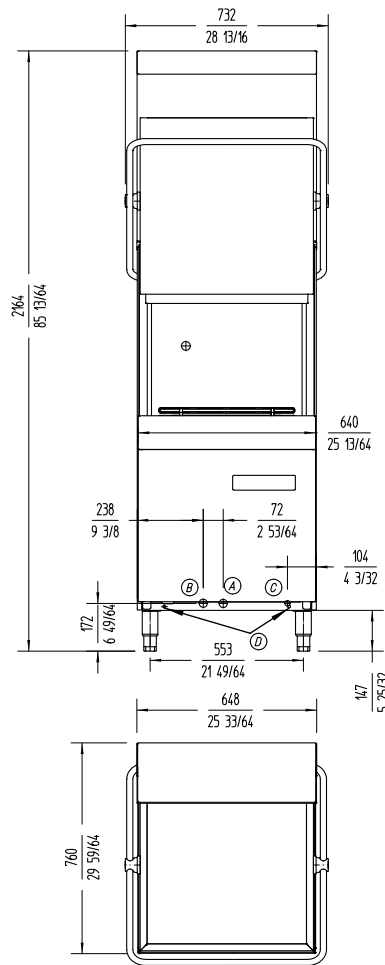
✓ Height: 1920 mm / 1468 mm

Net weight: 119.3 Kg

Crated dimensions

760 x 860 x 1470 mm

Gross weight: 130.9 Kg.



WARE WASHING
PASS-THROUGH DISHWASHERS



www.sammic.co.uk

Food Service Equipment Manufacturer

Unit 2, Trevanah Road

Troon Industrial Park

LE4 9LS - Leicester

uksales@sammic.com

Tel.: +44 0116 246 1900



Project

Date

Item

Qty

Approved

product sheet
updated 09/03/2021