



IMMERSION BLENDER XM-12 230/50-60/1

Compact immersion blender. 240 W.



3030618



✓ Approved by NSF: guaranteed safety and hygiene.

INCLUDES

✓ Variable speed motor block. ✓ MA-12 mixer arm.

OPTIONAL

□ MA-11 mixer arm.

SPECIFICATIONS

Total loading: 240 W
Maximum recipient capacity: 10 l
Maximum working depth: 148.6 mm
Motor speed: 1500 - 15000 rpm
Blade diameter: 44 mm
Blade guard diameter: 65 mm
Electrical supply: 230 V / 50-60 Hz / 1~ (0.7 A)
Plug: EU (SCHUKO 2P)

Length

Liquidising arm length: 223 mm
Total length: 448 mm

Net weight: 1.51 kg
Noise level (1m.): <80 dB(A)

Crated dimensions

496 x 80 x 180 mm
Gross weight: 1.94 kg

SALES DESCRIPTION

- ✓ The most delicate preparations, airy blendings, smooth purees with no need of add-on tools.
- ✓ Designed for continuous use.
- ✓ Ideal for mise en place.
- ✓ Maximum comfort of use in recipients of up to 10 l.

All-in-one

- ✓ Versatility without add-on tools.
- ✓ Tri-blade, professional, made of tempered steel and equipped with a long lasting cutting edge.
- ✓ Vario-speed: adjustable speed.
- ✓ Ideal for mise-en-place and support in service.
- ✓ Designed to work with maximum comfort in recipients of up to 10 l of capacity.
- ✓ In option: shorter MA-11 mixarm.

Maximum comfort for the user

- ✓ Compact design: logical and manageable size.
- ✓ Ergo-design & bi-mat-grip: The external casing, in two materials, allows an ergonomic hold with an anti-slip grip and the handle features optimum inclination to minimise fatigue.
- ✓ Click-on-arm: detachable arm with quick and safe locking.
- ✓ Hood designed to avoid splashes during work.
- ✓ Intuitive use: very simple operation. Includes warning light when the machine is connected to the mains.

Designed to last

- ✓ Professional performance: it is capable of carrying out prolonged work without overheating.
- ✓ Life-plus: equipped with a motor which has passed all of the most demanding usage tests.
- ✓ Studied geometry: casing designed to avoid rolling and falling.
- ✓ Easy to clean: the arm can be washed under the tap or in the dishwasher.



DYNAMIC PREPARATION
COMMERCIAL HAND BLENDERS

product sheet
updated 14/05/2024



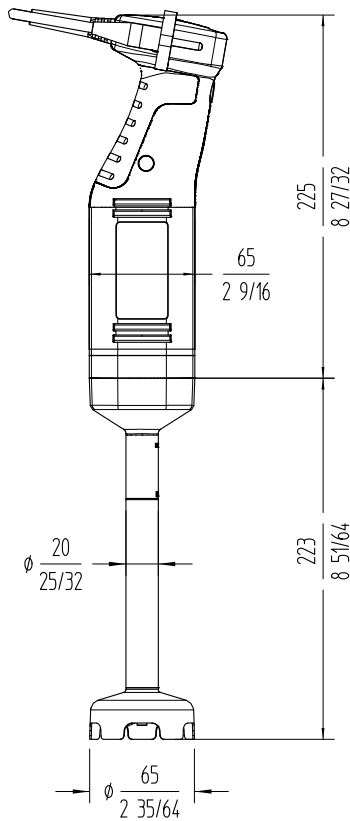
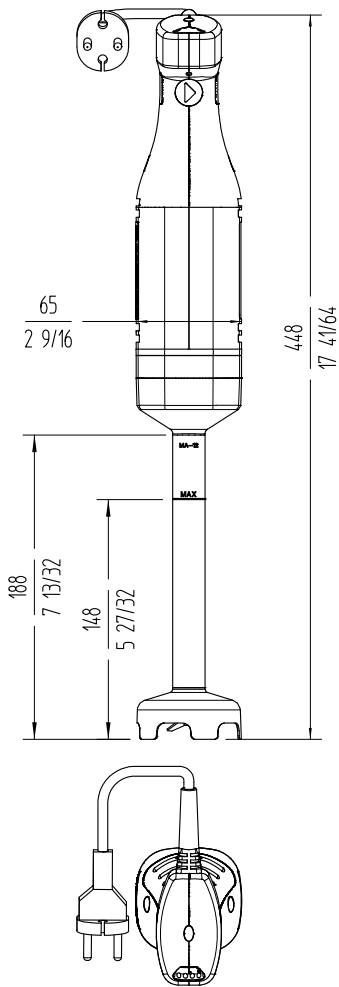
IMMERSION BLENDER XM-12 230/50-60/1

Compact immersion blender. 240 W.



3030618

DYNAMIC PREPARATION
COMMERCIAL HAND BLENDERS



www.sammic.co.uk
Food Service Equipment Manufacturer
Unit 2, Trevanah Road
Troon Industrial Park
LE4 9LS - Leicester
uksales@sammic.com
Tel.: +44 0116 246 1900



| | |
|----------|------|
| Project | Date |
| Item | Qty |
| Approved | |

product sheet
updated 14/05/2024